

Companies served



MSRCE

Materials Science Research Consulting Engineer
Service Disabled Veterans Owned Business (SDVOSB)

James A. Babb PE, LLC

- ✉ jhoward5420@yahoo.com
- ☎ 1-210-367-4058 (cell)
1-915-872-8598 (office)
- 🏠 **Physical & Mailing Address**
449 Chandelier Rd.
Horizon City, TX 79928
- 🕒 **Business Hours**
Monday - Friday 8 AM to 5 PM (MST)
- 🌐 www.linkedin.com/in/jameshoward

Get
in touch.

www.MSRCE.com



www.MSRCE.com





Material Science Research Consulting Engineer

www.MSRCE.com

MISSION

At MSRCE is to find the optimum solution, using scientific principles, to meet your needs in the areas of corrosion problems, materials science, materials engineering, metallurgical, electronic and mechanical systems, while adding value at competitive pricing.

Certifications



- DBE (TXDOT-TBOD)
- MBE Minority Certification
- National Minority Supplier Development Council (NMSDC)
- Texas-HUB
- Service Disabled Veterans Owned Business (SDVOSB)
- 8A (Pending)

DUNS#

06-328-7016

Cage Code#

7CP28

NAICS CODES

325211	331491	332112	332813
331110	331492	332117	423510
331410	331523	332811	541330
331420	331529	332812	541712

Industries served

Academia	Litigations	Military/Government
Aerospace	Logistics	Nuclear
BioMedical	Manufacturing	Petrochemical
Civil	Marine/Ocean	Telecommunications
Electronics		

“...His broad knowledge of materials, industrial processes, and technical applications make him a walking Wikipedia...”

-- James A. Babb, Professional Engineer
CEO Owner and Founder
NOCO2 Energy Engineering Firm

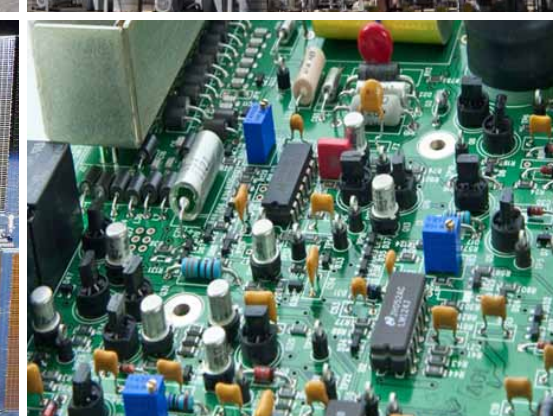
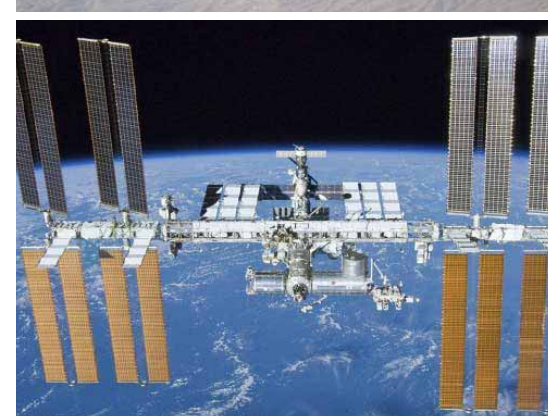
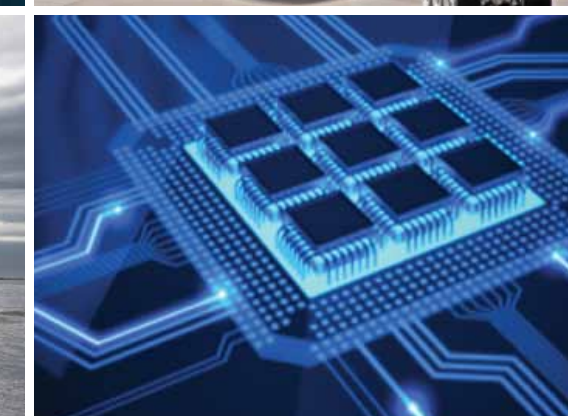


James H. Howard, Ph.D.

Ph.D., Materials Science and Engineering
M.S., Mechanical Engineering
M.S., Materials Science and Engineering
B.S., Physical Sciences and Engineering

Services

- Adhesives and Sealants
- Alloy Development
- Biomedical Materials
- Casting
- Ceramics and Glasses
- Characterization Interpretation
Scanning Electron Microscopy, Transmission Electron Microscopy, Optical Microscopy, X-Ray Diffraction, Fourier Transform Infrared Spectroscopy, Raman Spectroscopy, Reflective High Energy Electron/Low Energy Diffraction, Photo-luminescence, Hall Effect, Shock Wave Physics
- Chemical Behavior
- Coatings
- Composites
- Consulting
- Continuous Process Improvement
- Corrosion
- Electronics & Semiconductor Behavior
- Failure Analysis
- Foams
- Forging
- Fractography
- Fracture Mechanics
- Heat Treatment
- High Temperature Materials
- Joining-Welding Brazing and Soldering
- Lubrication
- Machining
- Magnetic Behavior
- Materials Development
- Materials Engineering
- Materials Science
- Materials Selection
- Mechanical Behavior Structures
- Mechanical Testing Interpretation
Creep/Stress Rupture/Fracture/Tensile/Hardness/Impact/Fatigue
- Medical Devices
- Melt Processing
- Metallography Interpretation
- Metallurgy/Superalloys
- Microfabrication
- Nanotechnology
- Non-Destructive Testing Interpretation
- Optical Behavior
- Polymer-Plastics
- Powder Metallurgy
- Printed Circuit Board
- Research and Commercialization
- Research Innovation and Implementation
- Root Cause Analysis-Troubleshooting
- Sensors and Semi-Conductor Electronics
- Sintering
- Solidification
- Steels
- Substantiation
- Super-Alloys
- Super-Ceramics
- Super-Composites
- Surface Engineering
- Synthesis Electronics
Chemical Vapor Deposition Molecular Beam Epitaxy, RF Magnetron Sputtering, Photolithography, Etch, Ion Implantation, Surface Mount Technology, Printed Circuit Board Module Card
- Thermodynamics
- Wear Tribology



EXPERIENCE • EDUCATION • INTEGRITY